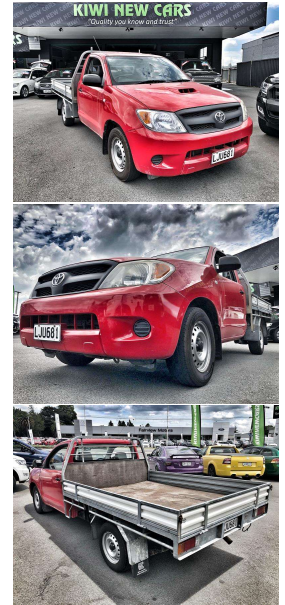
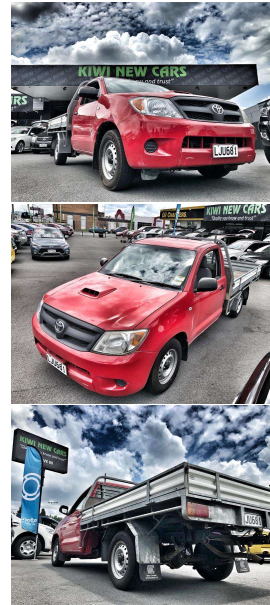


# 2008 Toyota HILUX 3.0TD S/C 2WD



## VEHICLE INFORMATION

### Cash Price

Includes GST,  
Registration &  
Licensing

**\$13,995**

Finance this vehicle  
from only

**\$70.43**

per week\*

Total Amount Payable

\$20,312.05

**finance  
NOW**



Gain peace of mind  
with Mechanical  
Breakdown Insurance.  
Ask us how.

### Body

2 door, Ute

### Odometer

270,580 km

### Engine

2982 cc, Diesel Turbo

### Fuel Type

Diesel

### Transmission

5-Speed Manual, Rear Wheel

### Wheels

-

### VIN

MROCZ12G500017719

### Reg No.

LJU681

### Ext Colour

Red

### History

-

### Seats

2 seats, Cloth

### Interior

Light Grey

### Audio

-

### Stock ID

578055

### Exterior Features

- » Electric Mirrors
- » Flatdeck

### Interior Features

- » Air Bag(s)
- » Car Stereo

### Mechanical Features

- » ABS Brakes



Kiwi New Cars, Phone 07 846 7108, Email [chris@kiwiniwecars.co.nz](mailto:chris@kiwiniwecars.co.nz)  
518 Te Rapa Road, Te Rapa, Hamilton 3200, New Zealand  
[www.kiwiniwecars.co.nz](http://www.kiwiniwecars.co.nz)

\* Finance calculation based on a 60 month term, \$2,000.00 deposit and with an example annual fixed interest rate of 15.95%. Actual interest rate may be higher or lower. Includes an establishment fee of \$495.00 and a monthly maintenance fee of \$1.80. Full term total amount payable of \$20,312.05. Estimate only, not an offer of finance. Terms, conditions and lending criteria apply.