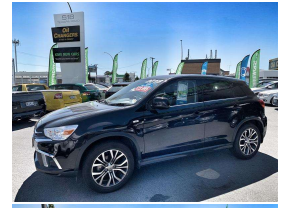


# 2018 Mitsubishi ASX XLS 2.0LT



## VEHICLE INFORMATION

### Cash Price

Includes GST,  
Registration &  
Licensing

**\$23,995**

Finance this vehicle  
from only

**\$126.49**

per week\*

Total Amount

Payable \$34,886.95

**finance  
NOW**



Gain peace of mind  
with Mechanical  
Breakdown  
Insurance. Ask us  
how.

### Body

4 door, SUV

### Odometer

33,527 km

### Engine

1998 cc

### Fuel Type

91 Petrol

### Transmission

Automatic

### Wheels

Factory Alloys

### VIN

JMFXTGA2WJZ004570

### Reg No.

LDB339

### Ext Colour

Black

### History

NZ New

### Seats

5 seats, Leather Suede

### Interior

Black, Leather/Suede

### Audio

CD Player

### Stock ID

578084

### Exterior Features

- » Alloys
- » Central Locking
- » Electric Mirrors
- » Electric Mirrors (Retractable)
- » Fog Lights
- » Remote Locking
- » Reversing Camera

### Interior Features

- » Air Bag(s)
- » Air Conditioning
- » Alarm
- » All Electrics
- » Aux/USB Input
- » Bluetooth
- » Car Stereo
- » Central Locking
- » Digital Dash
- » Digital Display
- » Tinted Windows

### Mechanical Features

- » ABS Brakes
- » Power Steering
- » Power Windows



Kiwi New Cars, Phone 07 846 7108, Email [chris@kiwinewcars.co.nz](mailto:chris@kiwinewcars.co.nz)  
518 Te Rapa Road, Te Rapa, Hamilton 3200, New Zealand  
[www.kiwinewcars.co.nz](http://www.kiwinewcars.co.nz)

\* Finance calculation based on a 60 month term, \$2,000.00 deposit and with an example annual fixed interest rate of 15.95%. Actual interest rate may be higher or lower. Includes an establishment fee of \$495.00 and a monthly maintenance fee of \$1.80. Full term total amount payable of \$34,886.95. Estimate only, not an offer of finance. Terms, conditions and lending criteria apply.