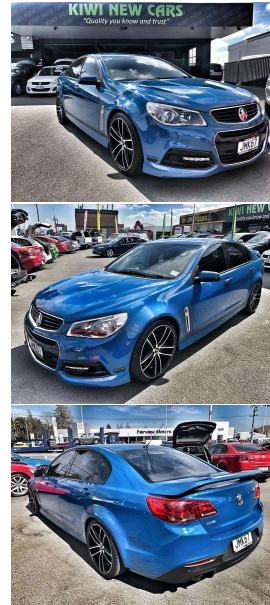


# 2013 Holden Commodore VF SV6



## VEHICLE INFORMATION

### Cash Price

Includes GST,  
Registration &  
Licensing

**\$24,995**

Finance this vehicle  
from only

**\$132.09**

per week\*

Total Amount Payable

**\$36,344.44**

**finance  
NOW**



Gain peace of mind  
with Mechanical  
Breakdown Insurance.  
Ask us how.

### Body

4 door, Sedan

### Odometer

64,150 km

### Engine

3564 cc, V6 Petrol

### Fuel Type

Petrol

### Transmission

Automatic, Rear Wheel Drive

### Wheels

Custom Alloys

### VIN

6G1FB5E3XEL933457

### Reg No.

JMK67

### Ext Colour

Blue

### History

-

### Seats

5 seats, Leather/Cloth

### Interior

Black

### Audio

-

### Stock ID

577900

### Exterior Features

- » Alloys
- » Electric Mirrors
- » Parking Sensors
- » Reversing Camera

### Interior Features

- » Air Bag(s)
- » Air Conditioning
- » Aux/USB Input
- » Bluetooth
- » Car Stereo

### Mechanical Features

- » ABS Brakes
- » Advanced Parking Assist
- » Cruise Control
- » Stability Control



Kiwi New Cars, Phone 07 846 7108, Email [chris@kiwinewcars.co.nz](mailto:chris@kiwinewcars.co.nz)  
518 Te Rapa Road, Te Rapa, Hamilton 3200, New Zealand  
[www.kiwinewcars.co.nz](http://www.kiwinewcars.co.nz)

\* Finance calculation based on a 60 month term, \$2,000.00 deposit and with an example annual fixed interest rate of 15.95%. Actual interest rate may be higher or lower. Includes an establishment fee of \$495.00 and a monthly maintenance fee of \$1.80. Full term total amount payable of \$36,344.44. Estimate only, not an offer of finance. Terms, conditions and lending criteria apply.